

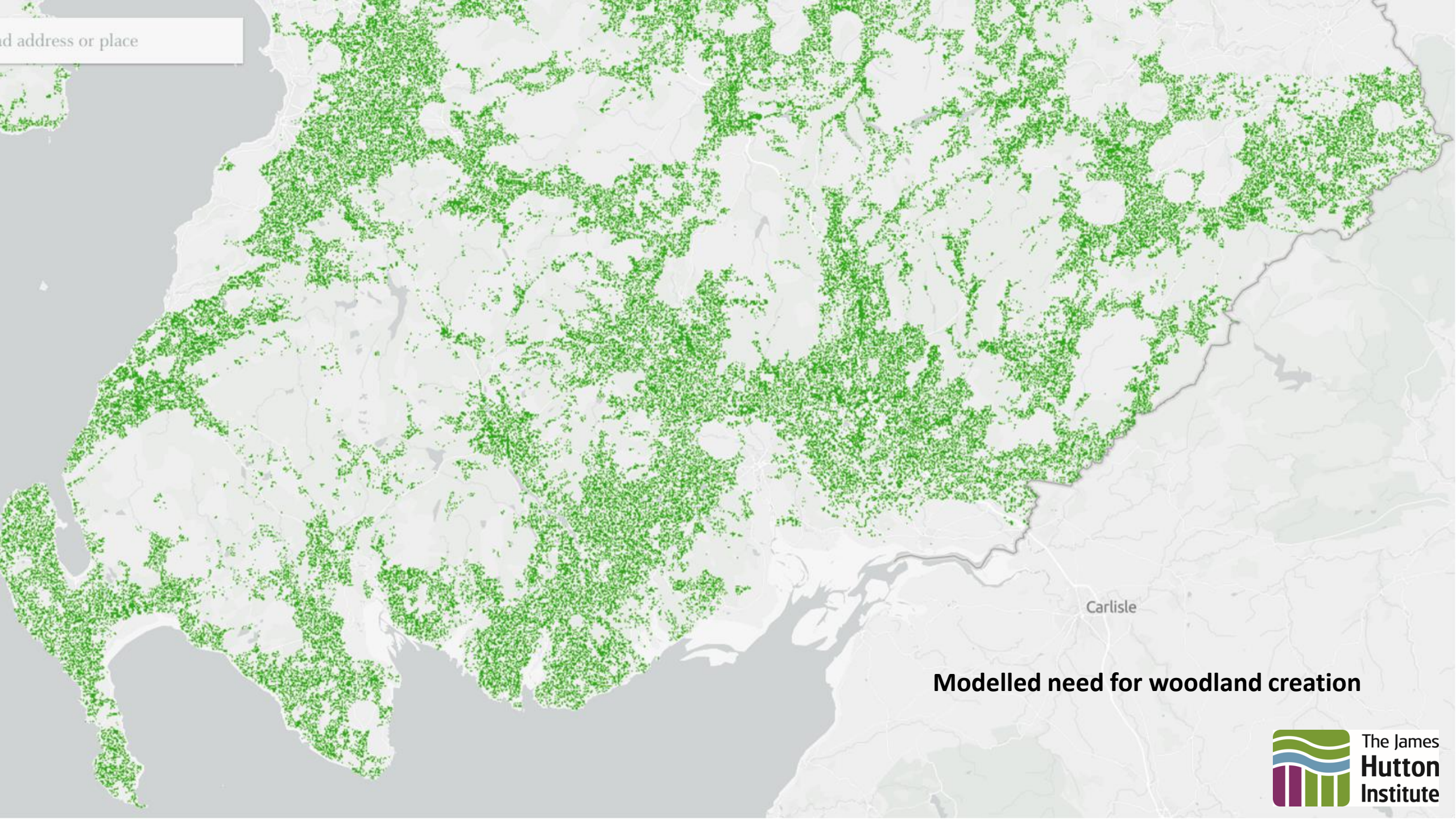
JHI Land Use Transformations

Key messages for South of Scotland region

INTRODUCTION

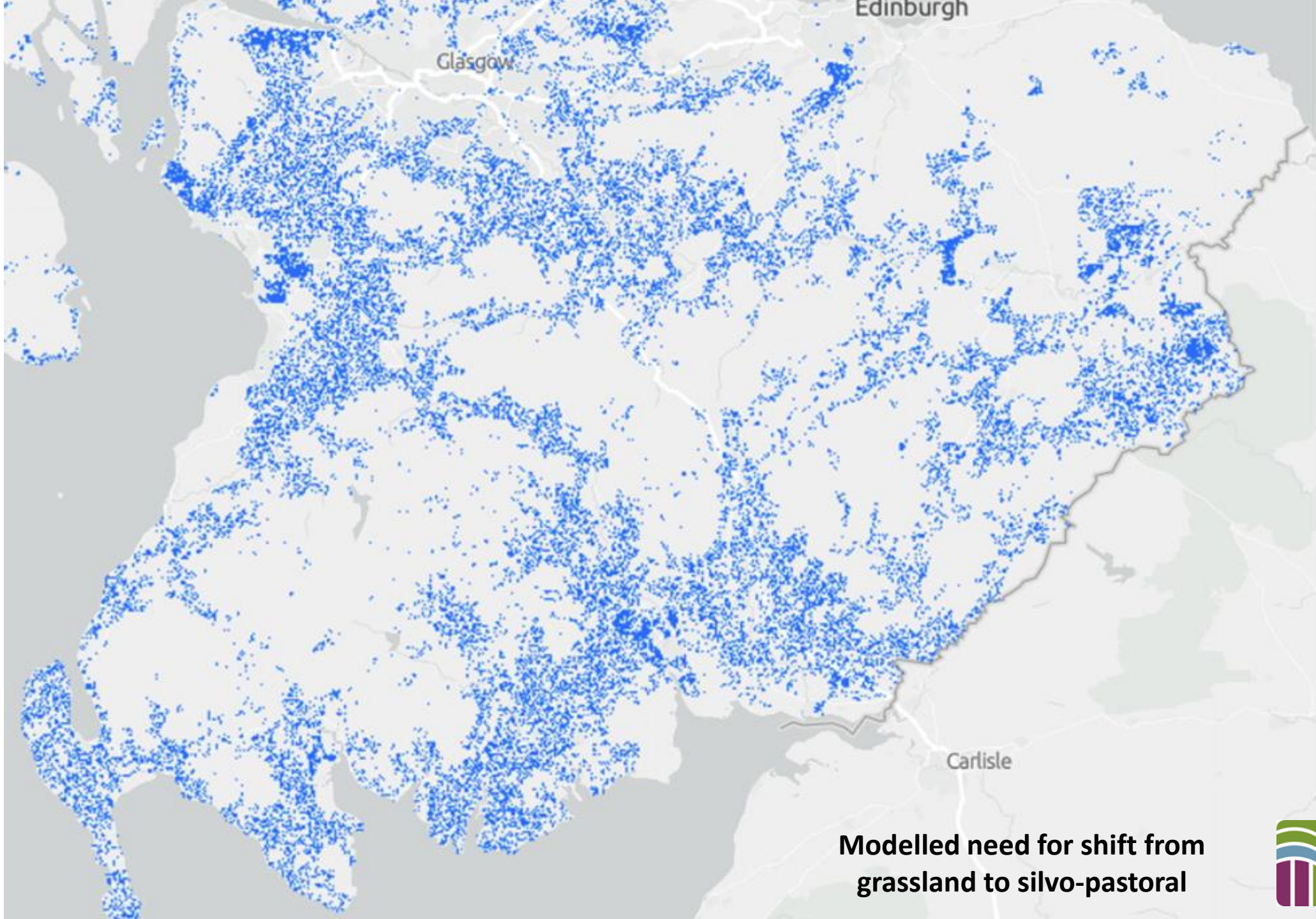
- Looked at what land use change might be required across Scotland to get towards net zero by 2050
- Focused on land use change to deliver the following multiple benefits:
 - Carbon storage through tree planting,
 - Emission reduction through deintensification of grassland and rough grazing,
 - Biodiversity enhancement through tree planting, and
 - Pollination to support food production.
- Constrained land use change options based on various bio-physical, policy and conservation restrictions
- NB. The [online mapping](#) is a “living” document that will continue to be updated and expanded.

Search address or place



Carlisle

Modelled need for woodland creation



Glasgow

Edinburgh

Carlisle

**Modelled need for shift from
grassland to silvo-pastoral**



The James
Hutton
Institute

